

Overview of Hematopoietic Stem Cell Transplantation in Africa

Dr Bazuaye GN

Associate Professor of Hematology
And blood Transfusion University of
Benin Teaching Hospital Nigeria



Africa

- Second largest continent
- Sovereign states: 54
- Population 1.000 million
- 380 million live on < U\$ 1 / day



DISTRIBUTION OF HSCT COUNTRIES(2012 WBMT REPORT)

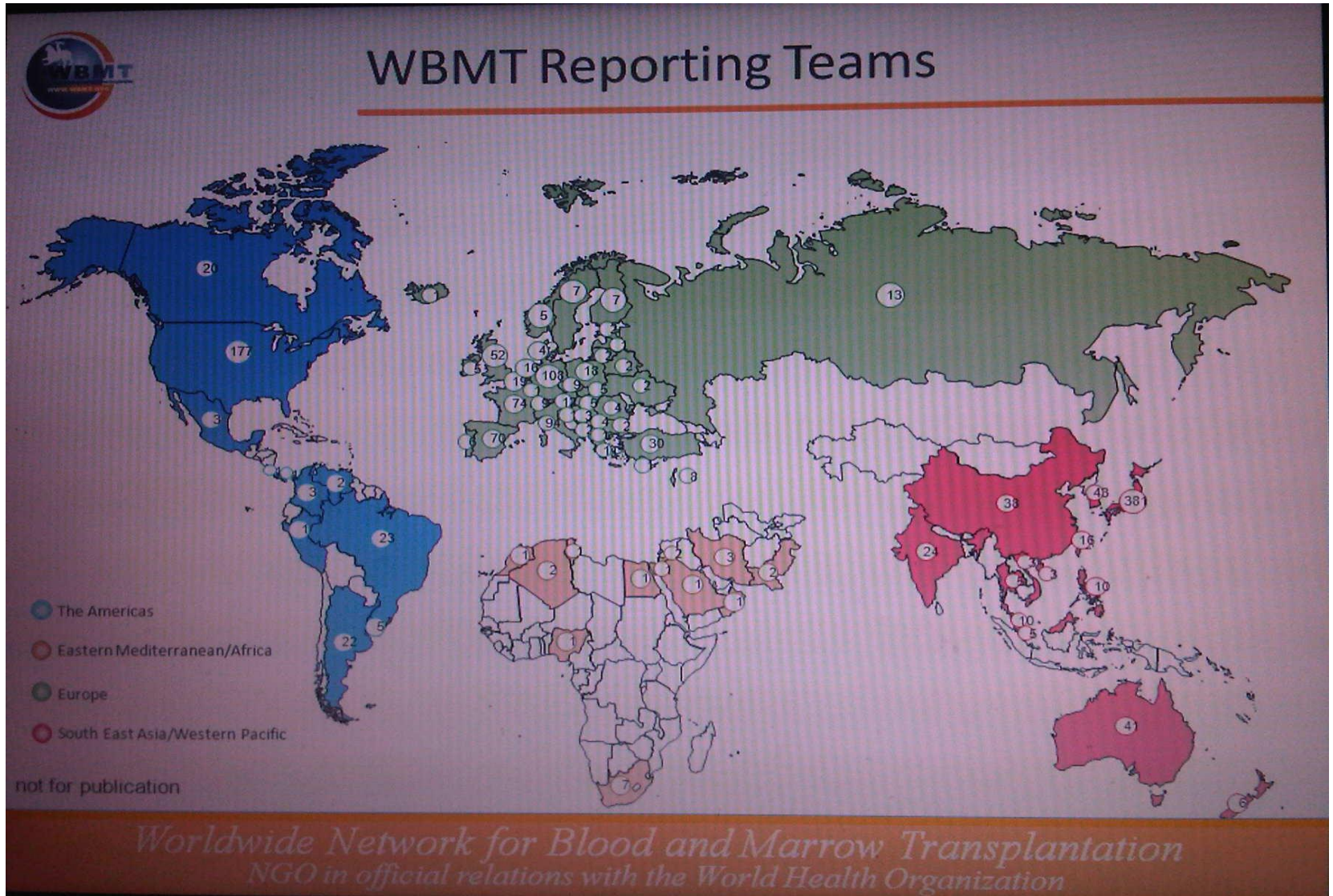
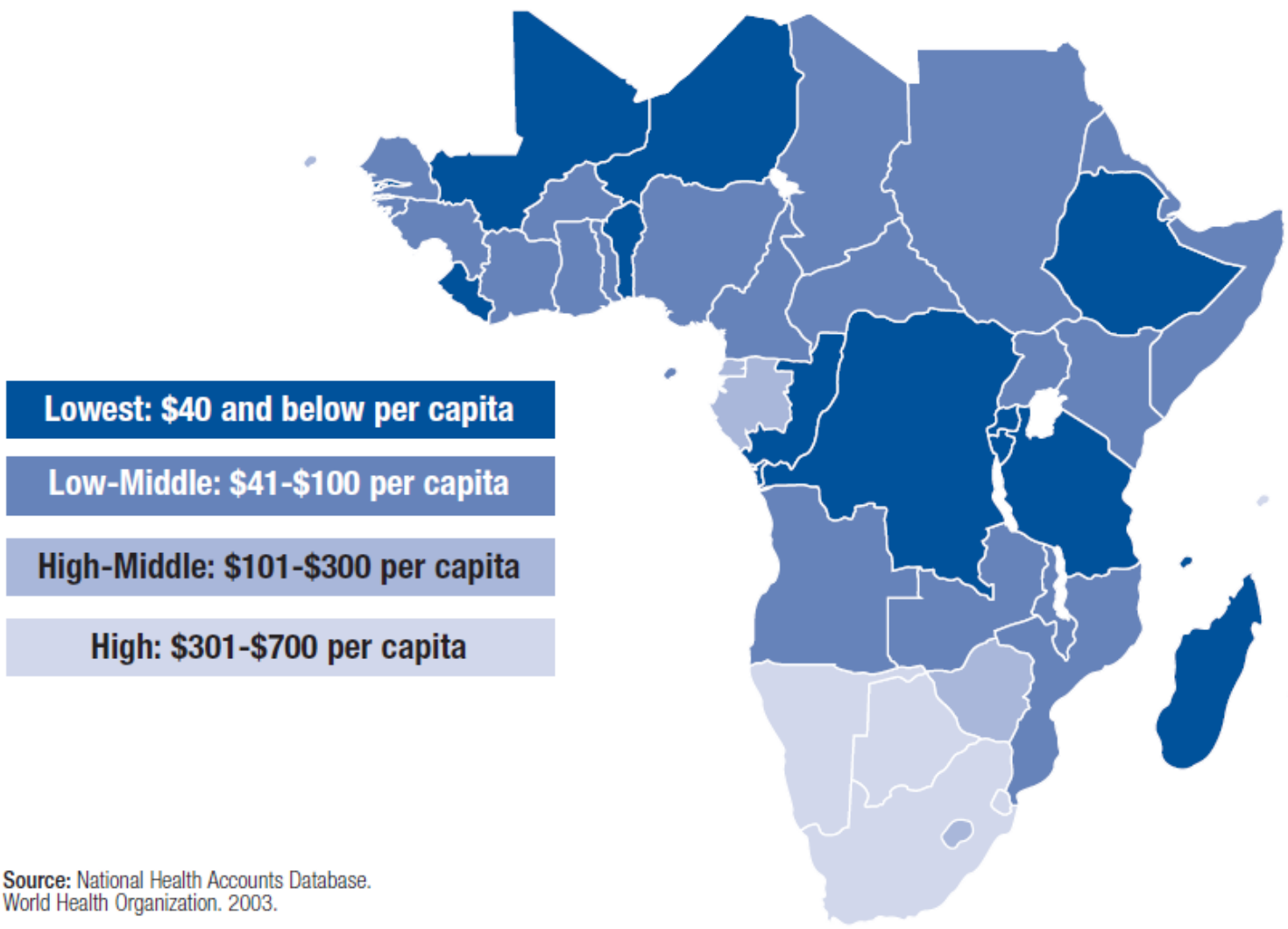


Figure 8.

Total Health Spending Per Capita in Sub-Saharan Africa



Source: National Health Accounts Database.
World Health Organization, 2003.



Figure 2. Global Burden of Disease Estimates for Sub-Saharan Africa, 2000

| | Cause of death | Deaths (%) out of total number of 10,778,044 |
|----|------------------------------|--|
| 1 | HIV/AIDS | 20.4 |
| 2 | Malaria | 10.1 |
| 3 | Lower respiratory infections | 9.8 |
| 4 | Diarrhoeal diseases | 6.5 |
| 5 | Perinatal diseases | 5.1 |
| 6 | Measles | 4.1 |
| 7 | Cerebrovascular disease | 3.3 |
| 8 | Ischaemic heart disease | 3.1 |
| 9 | TB | 2.8 |
| 10 | Road traffic accidents | 1.8 |
| 11 | Pertussis | 1.6 |
| 12 | Violence | 1.2 |
| 13 | COPD | 1.1 |
| 14 | Tetanus | 1.0 |
| 15 | Nephritis and nephrosis | 0.9 |
| 16 | Malnutrition | 0.9 |
| 17 | War | 0.8 |
| 18 | Syphilis | 0.8 |
| 19 | Diabetes mellitus | 0.7 |
| 20 | Drownings | 0.6 |
| 21 | All other specific cases | 23.2 |

Source: Jamison DT, et al. *Disease and Mortality in Sub-Saharan Africa. Executive Summary.* The World Bank. 2006.

World Economic Forum White Paper
Centre for Public-Private Partnership
Global Health Initiative



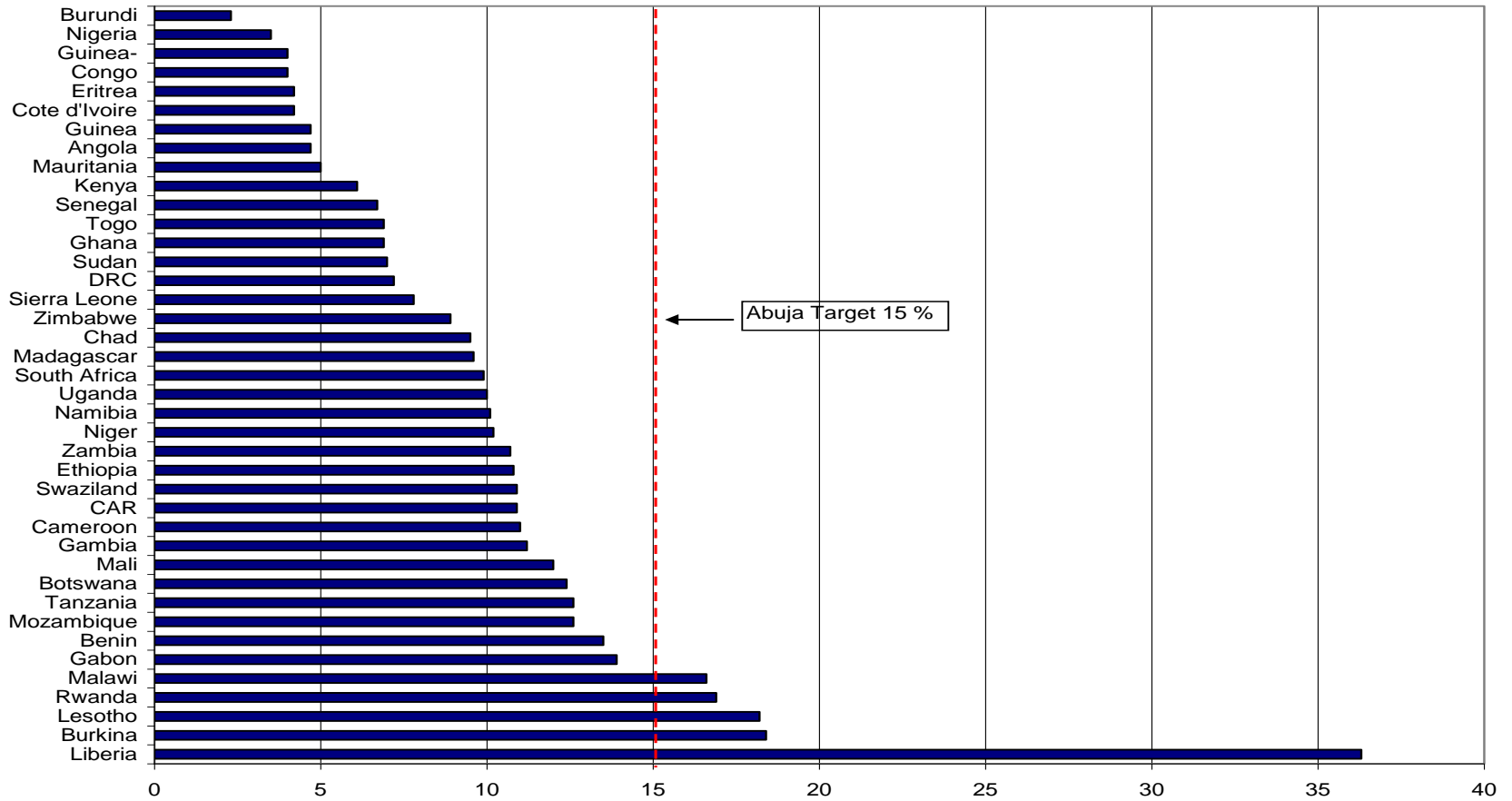
Health Expenditure vs. Population

- Population 12%
- Disease burden 22%
- Global health workforce 2%
- World health expenditure 1%
- WHO health expenditure (p/c) \$34
- Health expenditure (p/c) \$23
 - Government \$10.19
 - Private \$10.47
 - Other (NGO's, PPP) \$2.44
- Abuja target (of GDP) 15%



| | Total Health Spending / GDP | Govt. Health Spending / Total Expenditure | Country Out-of-Pocket expenditure / private expenditure on health |
|--------------|-----------------------------|---|---|
| Botswana | 8.3 | 18.2 | 27.7 |
| Kenya | 4.5 | 6.1 | 80.0 |
| Malawi | 12.2 | 16.6 | 30.6 |
| Mozambique | 4.3 | 12.6 | 40.5 |
| Nigeria | 3.9 | 3.5 | 90.4 |
| South Africa | 8.7 | 9.9 | 17.4 |
| Tanzania | 5.1 | 12.6 | 83.4 |
| Zambia | 5.6 | 10.7 | 71.5 |
| Zimbabwe | 8.1 | 8.9 | 52 |





39TH SCIENTIFIC CONFERENCE AND ANNUAL GENERAL MEETING



NIGERIAN SOCIETY FOR HAEMATOLOGY AND BLOOD TRANFUSION

