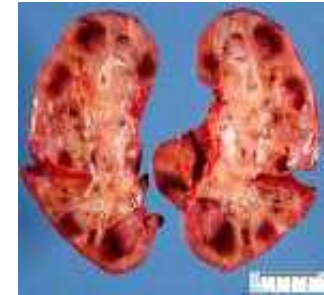
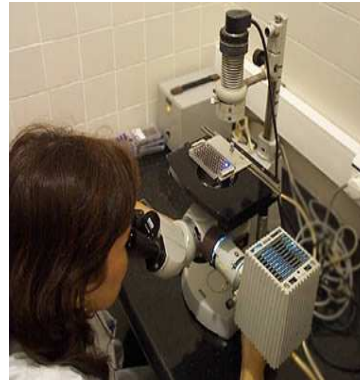
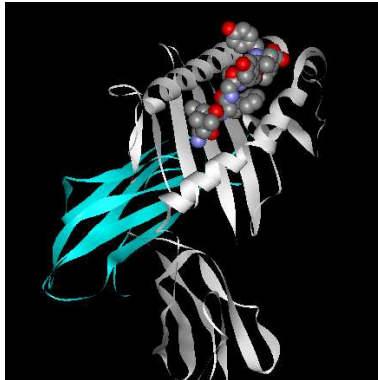


EFI/ASHI Standards Accreditation

WBMT Workshop-WHO

Hanoi, 11 November 2011

HLA – The Responsibility



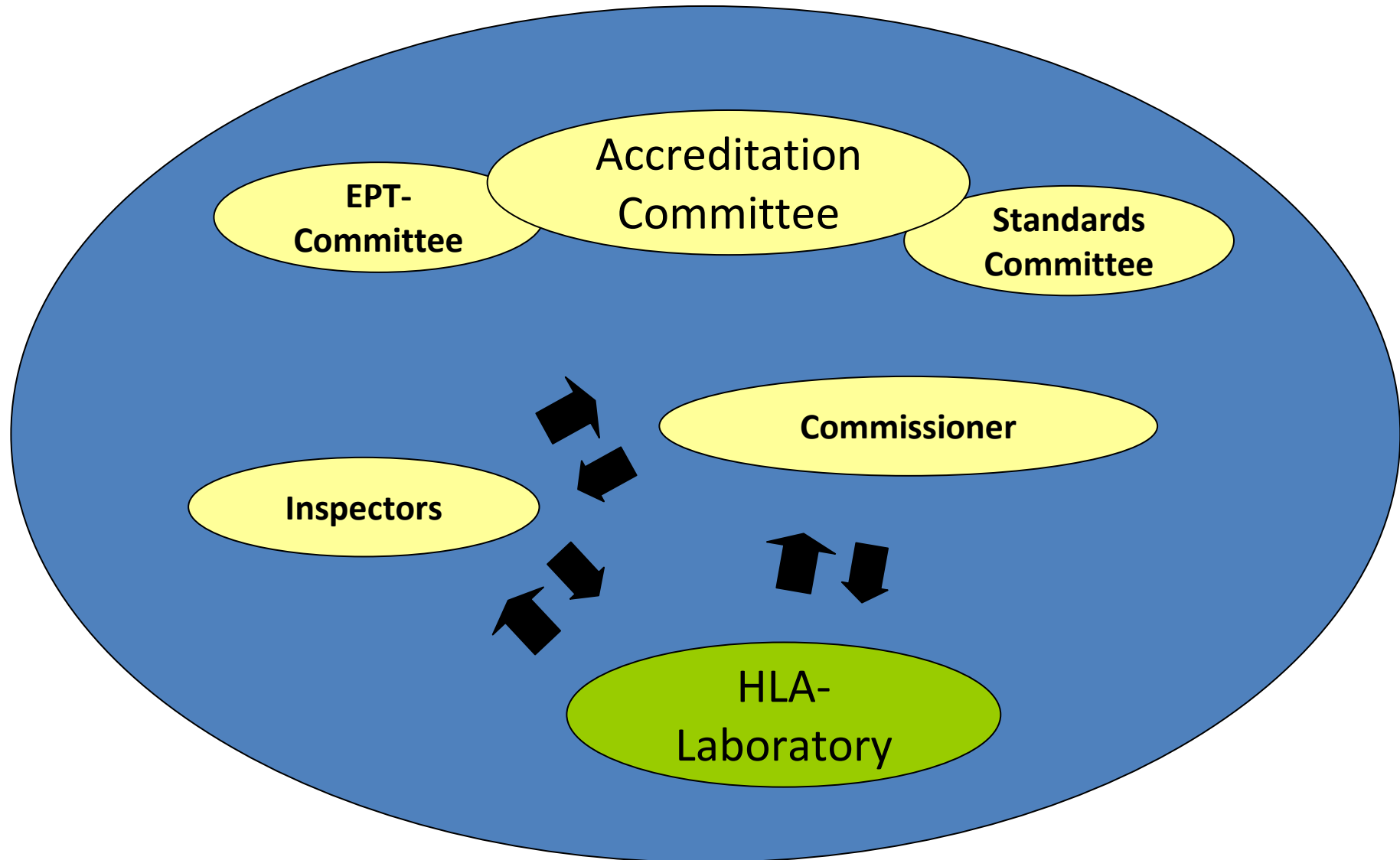
History ASHI/EFI

- 1974 Establishment of the Accreditation Committee ASHI
- 1976 Start of Laboratory Evaluations
- 1986 Upon recognition of the increasing diversity of histocompatibility testing and the growing number of laboratories seeking ASHI Accreditation, the ASHI Council charged the Accreditation Committee to revise the program to make it more specific to the activities of the laboratory
- ...
- 1991 Foundation of EFI
- 1996 First EFI accredited laboratory in Europe
- since 2006 Formal annual contacts between chairpersons of the the EFI and ASHI accreditation programme

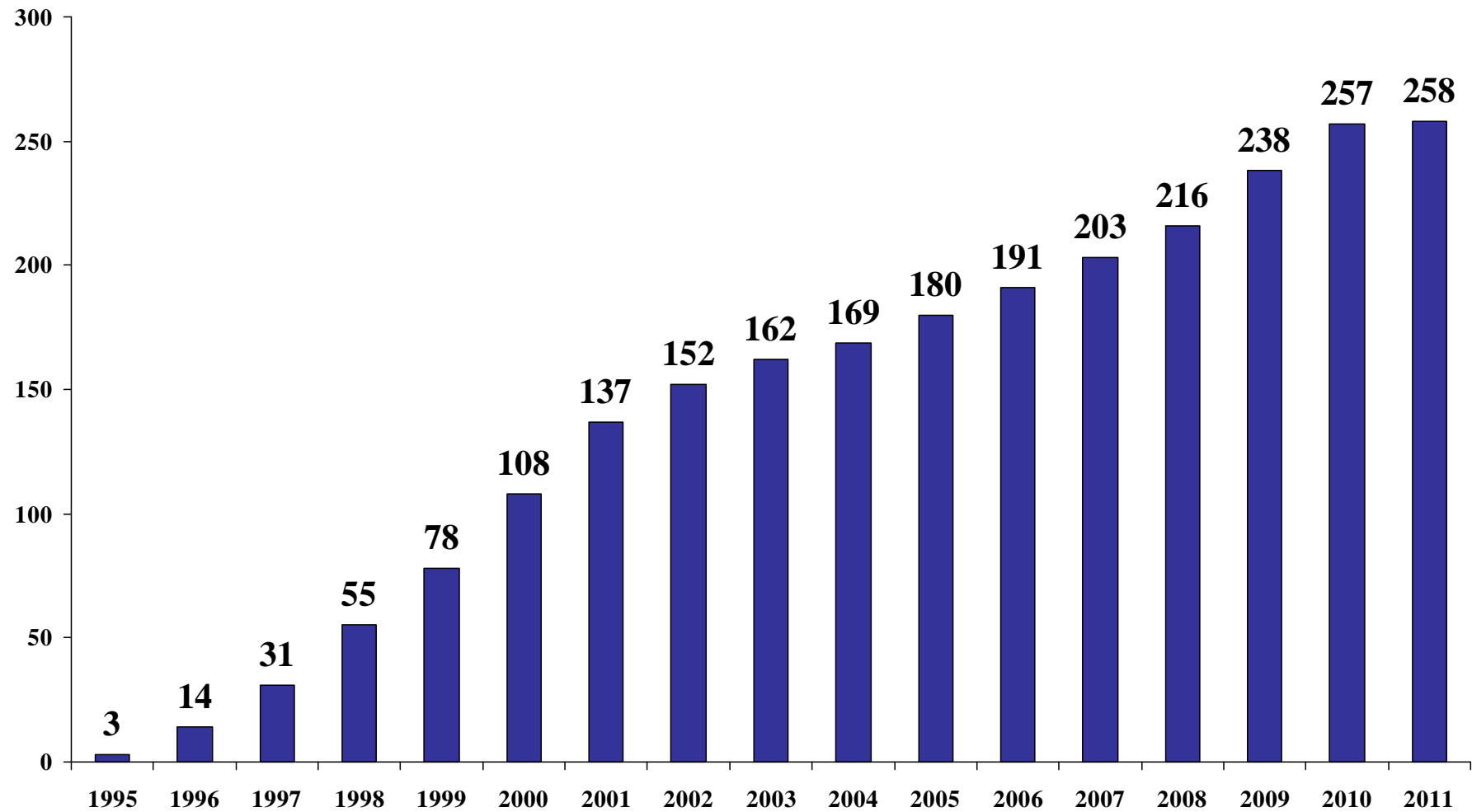
EFI Constitution - Article 3 (Purposes)

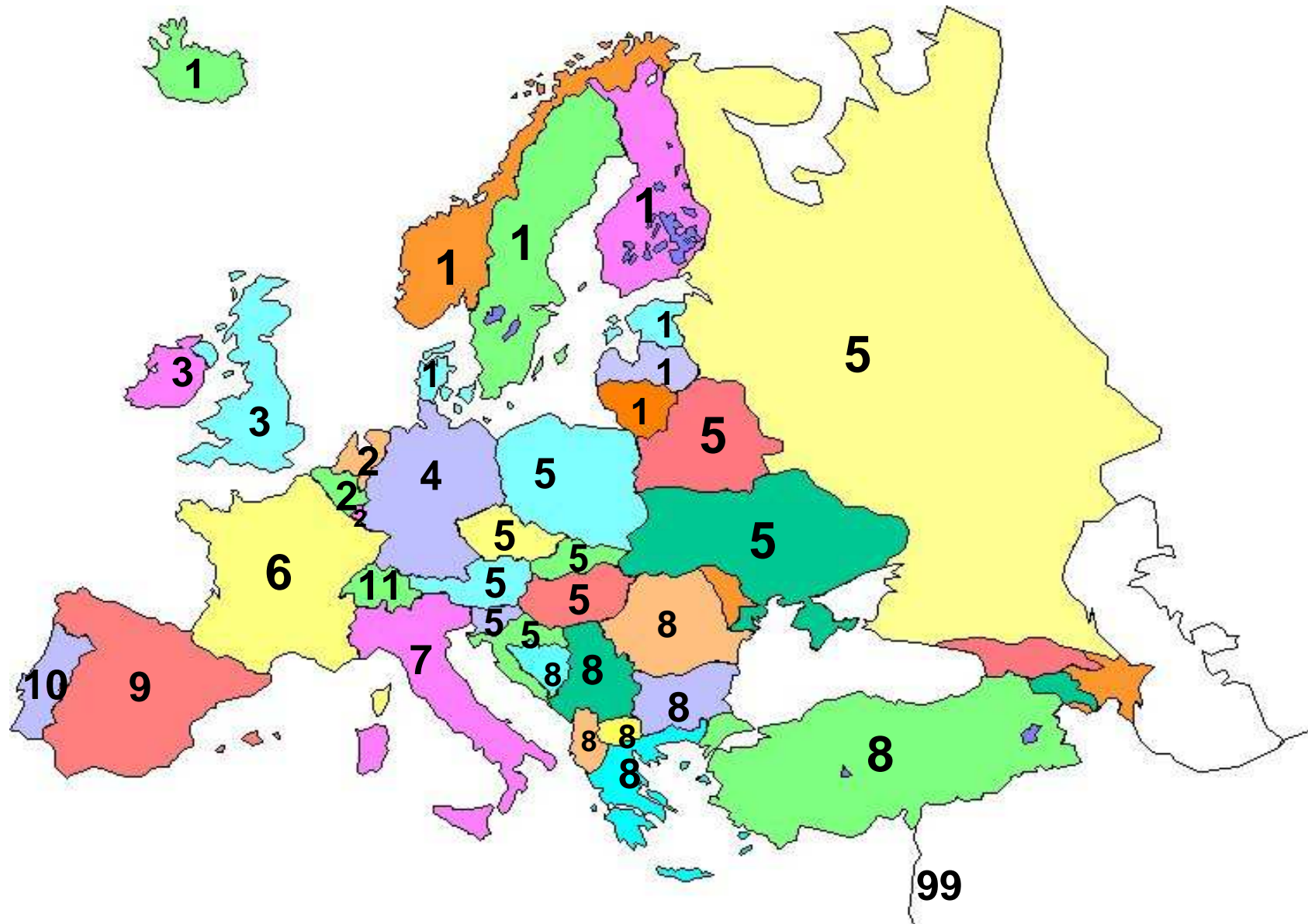
- To support the development of Immunogenetics
...
and **promote research** and training in this field.
...
- To develop recommendations for the
standardisation of techniques, quality control
and criteria for accreditation **and to support
their implementation.**
...

EFI Accreditation



EFI ACCREDITATIONS





EFI LABORATORY ACCREDITATION

REGION		ACCREDITED LABORATORIES
01	Scandinavia	11
02	Benelux	15
03	Uk + Ireland	20
04	Germany	49
05	Central Europe	16
06+11	France + Switzerl.	35
07	Italy	66
08+99	SE Europe/Israël/Arm	22
09+10	Spain + Portugal	23
99	South Africa	<u>1</u>
	Total	258

EFI Standards

- Proposed by any member
- Discussed and phrased by the Standards Committee
- Commented by the membership
- Re-evaluated by the Standards Committee
- Accepted by the Executive Committee
- Published and obligatory for all accredited laboratories

EFI Standards Outline

- A - GENERAL POLICIES
- B - PERSONNEL QUALIFICATIONS
- C - QUALITY ASSURANCE
- D - HLA ALLELES AND ANTIGENS
- E - SEROLOGICAL HLA CLASS I AND CLASS II TYPING
- F - ANTIBODY SCREENING AND CROSSMATCHING
- G - RENAL and/or PANCREAS TRANSPLANTATION
- H - OTHER ORGAN TRANSPLANTATION
- I - HAEMATOPOIETIC STEM CELL TRANSPLANTATION
- J – HLA AND TRANSFUSION
- K - DISEASE ASSOCIATION
- L – NUCLEIC ACID ANALYSIS
- M - FLOW CYTOMETRY
- N - ENZYME-LINKED IMMUNO SORBENT ASSAY (ELISA)

I - HAEMATOPOIETIC STEM CELL TRANSPLANTATION

- I1.000 Histocompatibility testing for related transplants.
- I2.000 Histocompatibility testing for unrelated transplants.
 - I2.100 Volunteer bone marrow donor registries.
 - I2.200 Typing of Units for Cord Blood Banks
 - I2.300 Histocompatibility testing for transplants from unrelated donors.
 - I2.400 Unrelated Cord Blood Unit Typing at Transplant Centre for Donor Selection
 - I2.500 Unrelated Cord Blood Unit Typing Prior to Transplantation
- I3.000 Crossmatching.
- I4.000 Haemopoietic Chimaerism and Engraftment (HCE) Monitoring

Most Frequent Findings

- I1.110 HLA typing for HLA phenotypically identical siblings must include adequate testing to definitively establish HLA identity by descent (D2.120 applies), or use high resolution Class I and/or Class II typing by DNA methods to determine the degree of HLA matching as documented in the transplant protocol.

Institutions Requiring EFI or ASHI Accreditation

- **WMDA** (WORLD MARROW DONOR ASSOCIATION)
- **NMDP** (NATIONAL MARROW DONOR PROGRAM)
- **JACIE** (JOINT ACCREDITATION COMMITTEE OR
ISCT-EUROPE AND EBMT)
- **NETCORD-FACT** (CORD BLOOD
SHARING ORGANISATION)
- **BSBMT/UKCCSG** (BRITISH SOCIETY FOR BONE MARROW
TRANSPLANTATION)
- **EUROTRANSPLANT** (ORGAN SHARING ORGANISATION)

If theory and reality differ, this is
bad for reality

Hegel

