

WHICH PATIENTS CAN BE BEST SERVED BY A HCT PROGRAM

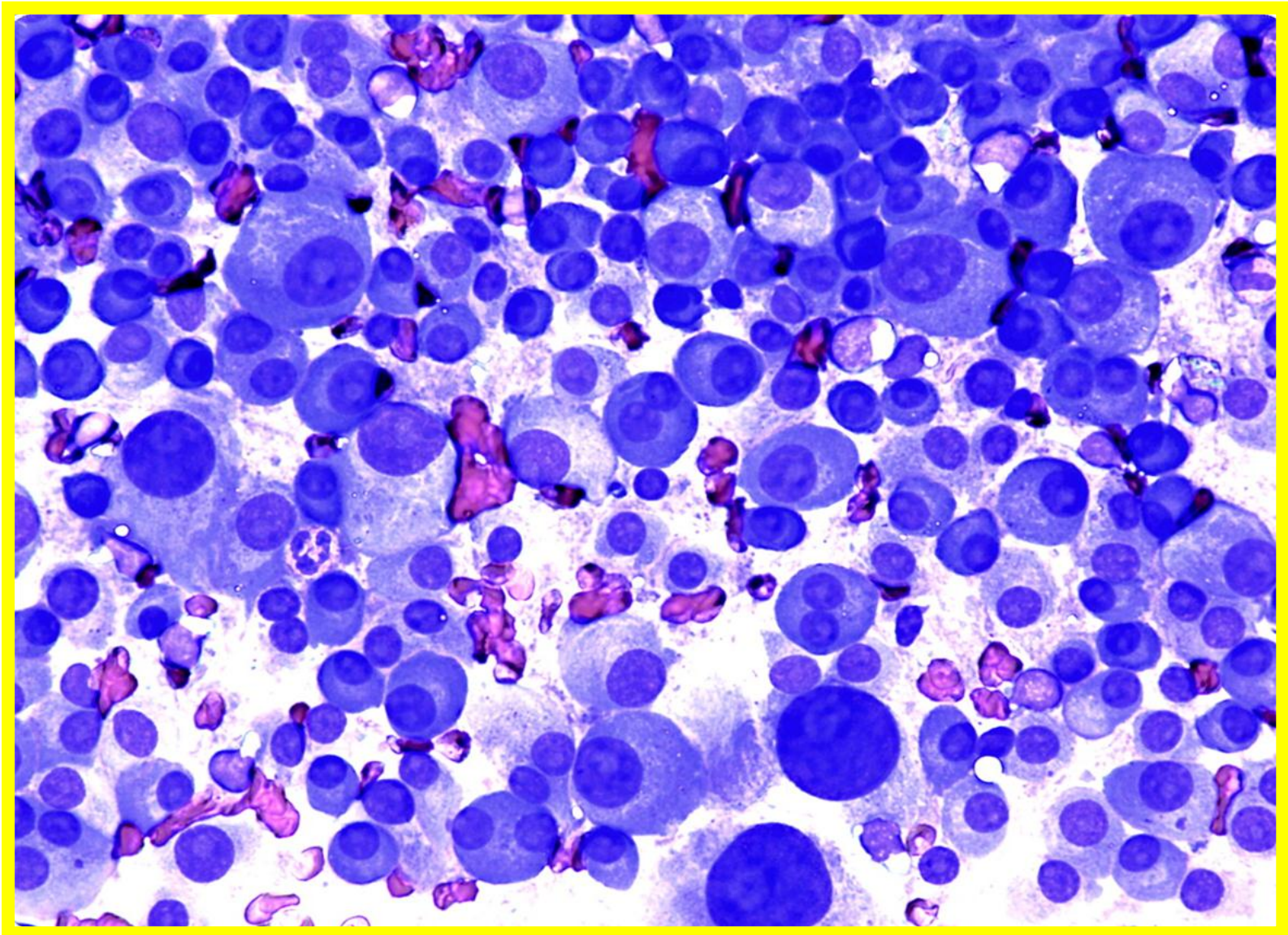
- WBMT WORKSHOP , BRAZIL
- **David Gómez- Almaguer**
-
- **MEXICO**

INITIAL STEPS

- DO IT SIMPLE iii
- CHOOSE THE BEST PATIENT
- A GOOD AND EFFICIENT LAB IS NEEDED
- GOOD BLOOD BANK SUPPORT
- AUTOLOGOUS HCT BEFORE ALLOGENEIC
- ***FINALLY: PERSEVERANCE, INFORMATION, IMAGINATION ANDGOOD LUCKiii***

AUTOLOGOUS

- MYELOMA
- HODGKIN LYMPHOMA
- NHL
- AML



2009

Bone Marrow Transplantation (2009) 00, 1–5

© 2009 Macmillan Publishers Limited All rights reserved 0268-3369/09 \$32.00

www.nature.com/bmt



ORIGINAL ARTICLE

A simplified method for stem cell autografting in multiple myeloma: a single institution experience

A López-Otero¹, GJ Ruiz-Delgado^{1,2} and GJ Ruiz-Argüelles^{1,2}

¹*Centro de Hematología y Medicina Interna de Puebla, Puebla, Mexico* and ²*Laboratorios Clínicos de Puebla, Puebla, Mexico*

Ann Hematol 2010; May 21

ORIGINAL ARTICLE

Outpatient reduced-intensity allogeneic stem cell transplantation for patients with refractory or relapsed lymphomas compared with autologous stem cell transplantation using a simplified method

**Cesar Homero Gutiérrez-Aguirre • Guillermo Ruiz-Argüelles •
Olga Graciela Cantú-Rodríguez • Oscar González-Llano • José Carlos Jaime-Pérez •
Fernando García-Rodríguez • Avril López-Otero • José Luis Herrera-Garza •
David Gómez-Almaguer**

Ann Hematol 2010; May 21

ORIGINAL ARTICLE

Outpatient reduced-intensity allogeneic stem cell transplantation for patients with refractory or relapsed lymphomas compared with autologous stem cell transplantation using a simplified method

**Cesar Homero Gutiérrez-Aguirre • Guillermo Ruiz-Argüelles •
Olga Graciela Cantú-Rodríguez • Oscar González-Llano • José Carlos Jaime-Pérez •
Fernando García-Rodríguez • Avril López-Otero • José Luis Herrera-Garza •
David Gómez-Almaguer**

ALLOGENEIC

- APLASTIC ANEMIA
- CML
- ACUTE LEUKEMIAS
- INDOLENT NHL

2006

American Journal of Hematology 81:157–161 (2006)

Allografting in Patients With Severe, Refractory Aplastic Anemia Using Peripheral Blood Stem Cells and a Fludarabine-Based Conditioning Regimen: The Mexican Experience

**David Gómez-Almaguer,¹ Jorge Vela-Ojeda,² José C. Jaime-Pérez,¹
César H. Gutiérrez-Aguirre,¹ Olga G. Cantú-Rodríguez,¹ Pedro Sobrevilla-Calvo,³
Silvia Rivas-Vera,³ J. David Gómez-Rangel,⁴ and Guillermo J. Ruiz-Argüelles^{4*}**

¹ Servicio de Hematología, Hospital Universitario Dr. José Eleuterio González, UANL, Monterrey, Nuevo León, NL, Mexico

² Centro Médico La Raza, Instituto Mexicano del Seguro Social, México City, Mexico

³ Instituto Nacional de Cancerología, México City, Mexico

⁴ Centro de Hematología y Medicina Interna de Puebla, Puebla, Mexico

Allografting

The early referral for reduced-intensity stem cell transplantation in patients with Ph1 (+) chronic myelogenous leukemia in chronic phase in the imatinib era: results of the Latin American Cooperative Oncohematology Group (LACOHG) prospective, multicenter study

GJ Ruiz-Argüelles^{1,2}, D Gómez-Almaguer³, A Morales-Toquero¹, CH Gutiérrez-Aguirre³, J Vela-Ojeda⁴, MA García-Ruiz-Esparza⁴, C Manzano¹, A Karduss⁵, A Sumoza⁶, C de-Souza⁷, E Miranda⁷ and S Giralt⁸

¹Centro de Hematología y Medicina Interna de Puebla, Puebla, México; ²Laboratorios Clínicos de Puebla, Puebla, México; ³Hospital Universitario de Monterrey, Monterrey, México; ⁴Centro Médico La Raza, Instituto Mexicano del Seguro Social, México City, México; ⁵Instituto de Cancerología, Clínica Las Américas, Medellín, Colombia; ⁶Universidad de Carabobo, Valencia, Venezuela; ⁷Universidad de Campinas, Sao Paulo, Brazil; and ⁸MD Anderson Cancer Center, Houston, TX, USA

OBRIGADO, GRACIAS