

**Workshop of the WBMT in collaboration with WHO**

**Donor safety and donor follow up**

**Donor outcome follow up**

---

**Yoshihisa Kodera**

**Japan, APBMT**

**Salvador-Bahia, Brazil**

**3 & 4 October 2013**

# Necessity

- ◆ Vigilance and surveillance are essential for every transplant medicine (WHO)
- ◆ Donor's safety is one of the major subjects in this issue.
- ◆ It is considered HSC donor's safety is ordinary without any SAE.
- ◆ Because of this consensus, occurrence of SAE may give significantly negative impact to HSCT.

# Necessity

- ◆ Vigilance and surveillance to volunteer donors is systemically implemented by WMDA as well as every BM bank.
- ◆ On the other hand, this issue at non-bank donors (mostly family donors) has not been shed lights.
- ◆ The survey through literatures showed certain SAEs have occurred among non-bank donors to which vigilance and surveillance was insufficient.

# Importance of pre-registration

## -Especially from the view of donor safety-

### As of 2010

System	Pre-registration	Fatal event within 30 days
<b>Unrelated</b>		
BM Japan	Yes	0
World	Yes	0
PB Japan	-	-
World	Yes	0
<b>Family</b>		
BM Japan	No	1
World	No	Several
PB Japan	Yes	0
World	No	11



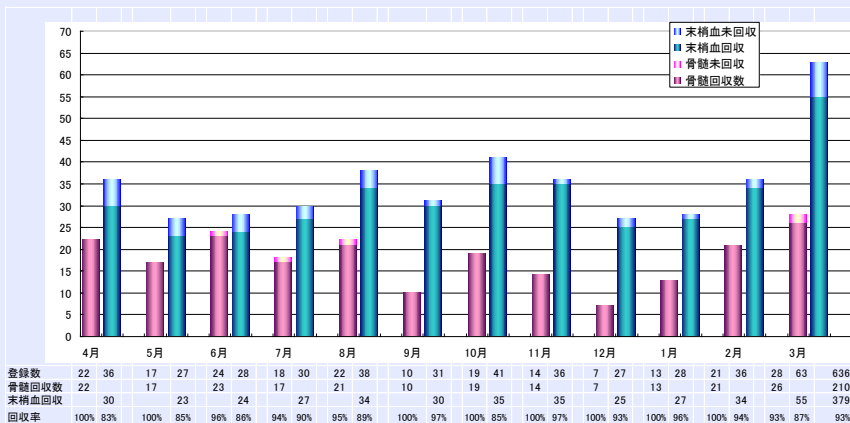
# Result

## Summary of registration

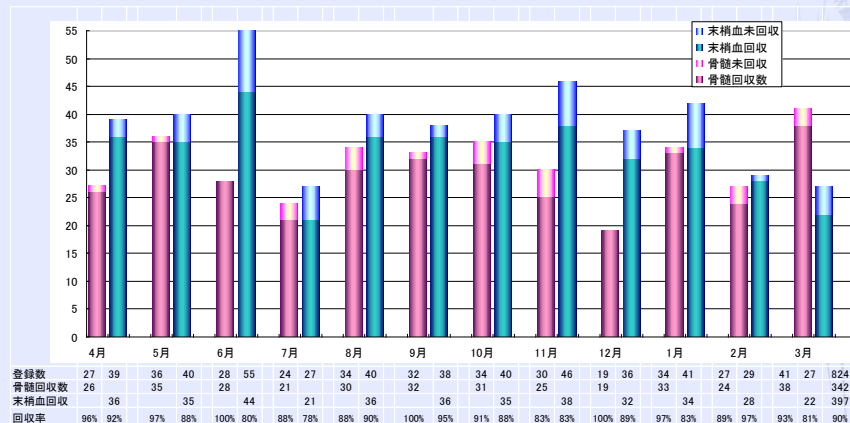
- ◆ **Total: 6,735 cases**
  - BM: 2,580 cases**
  - PB: 4,155 cases**
- ◆ **Team numbers participated: 242 teams**
- ◆ **From 1,4,2005-31,12,2012**

# Status of BM & PB Donor Registration

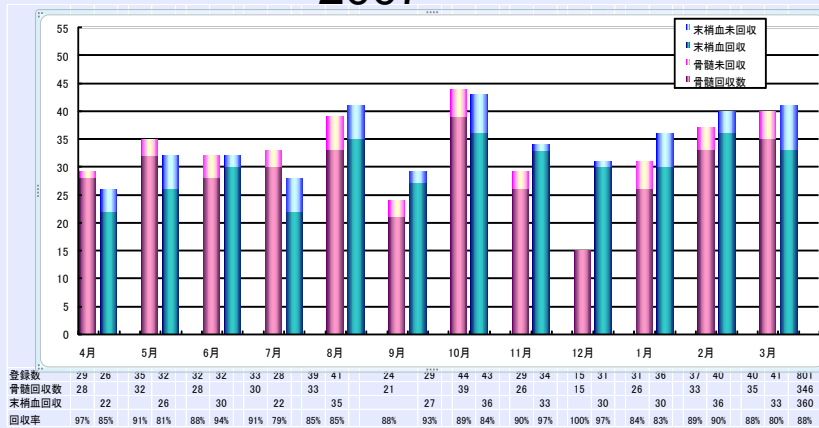
2005



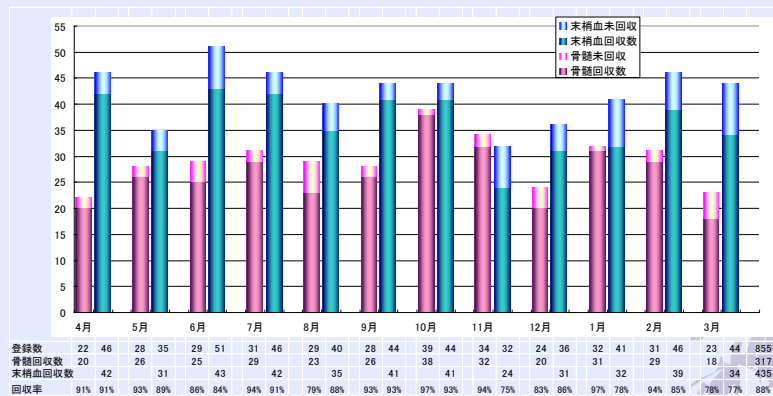
2006



2007

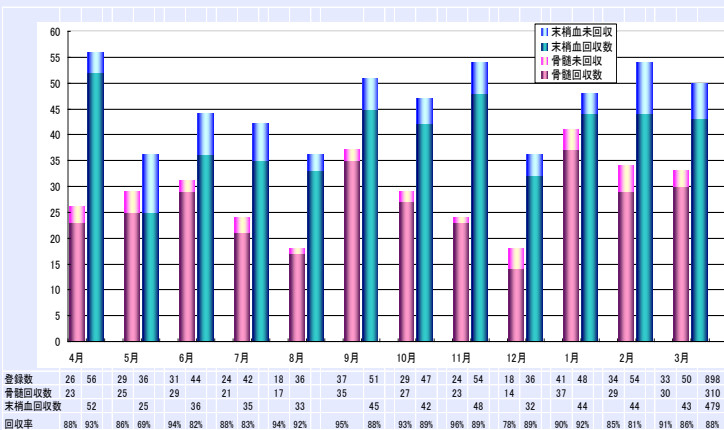


2008

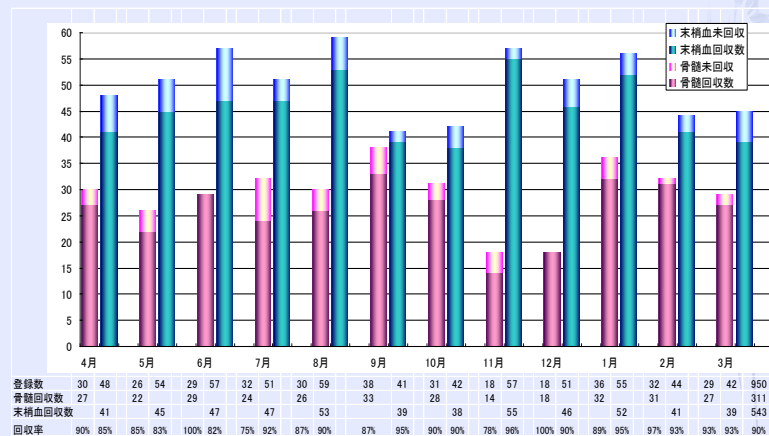


# Status of BM & PB Donor Registration

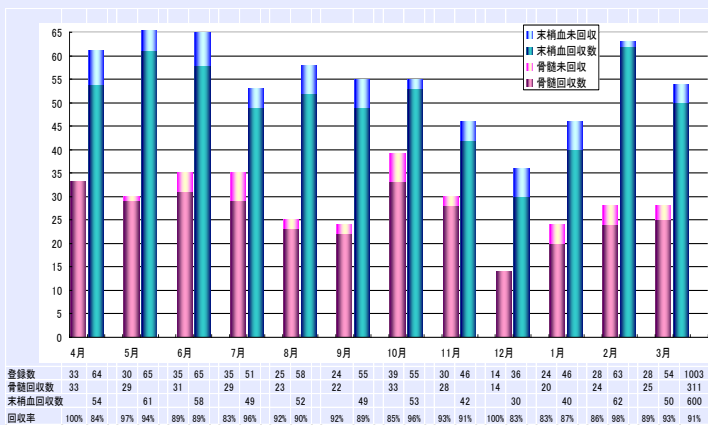
2009



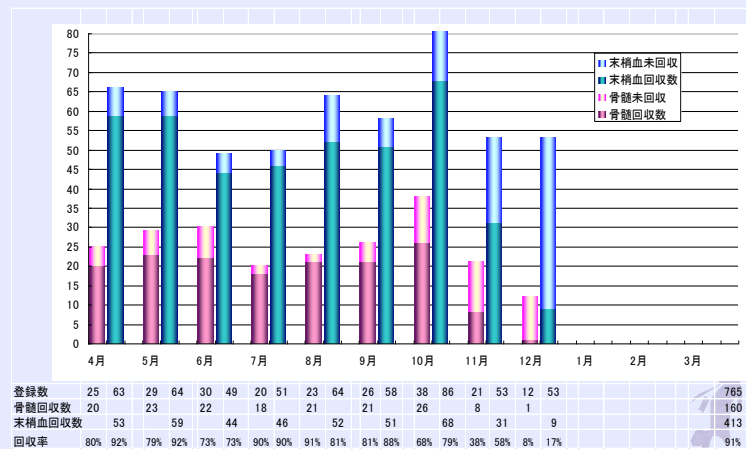
2010



2011



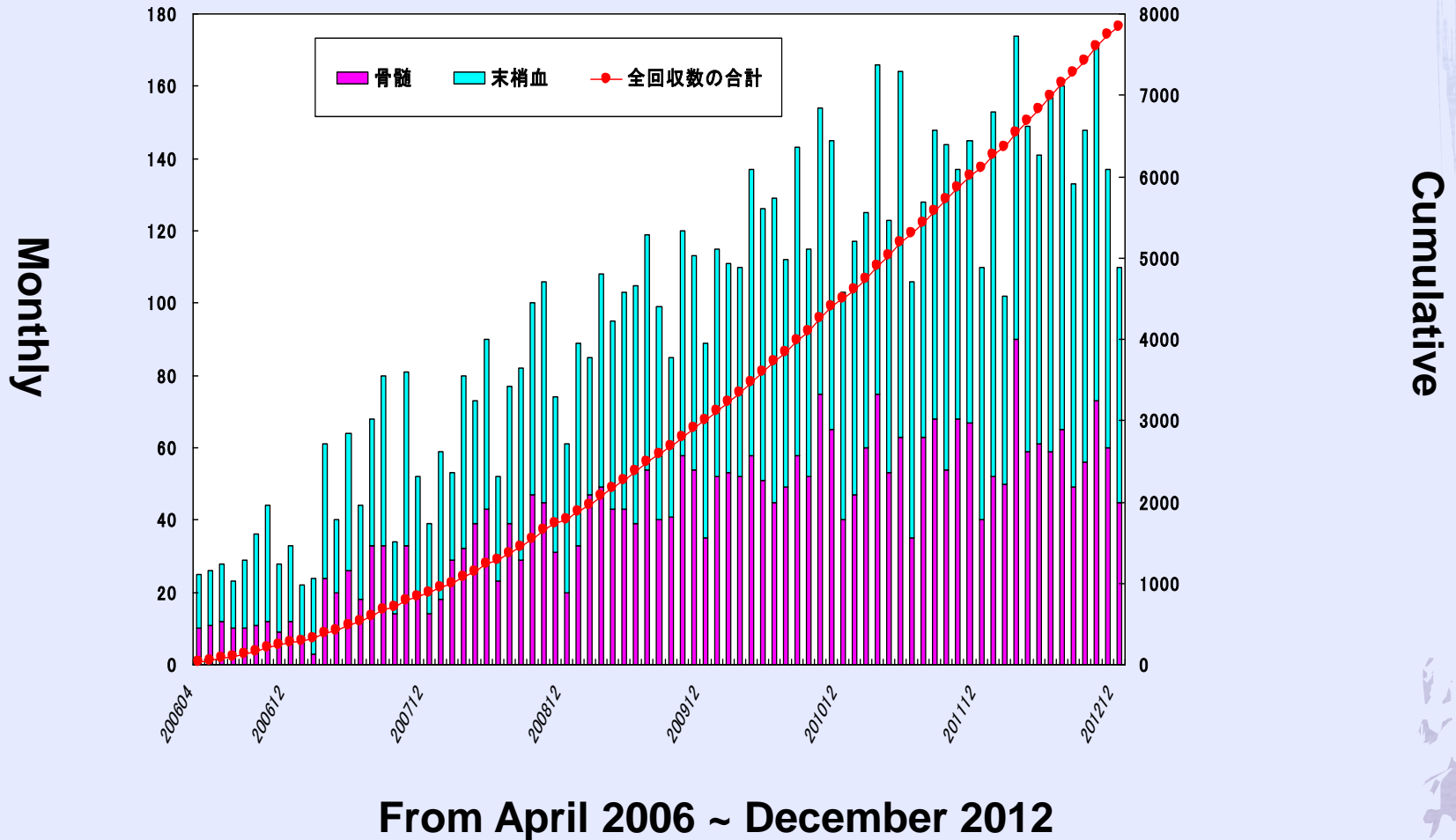
2012





# Status of annual questionnaires

Response rate: BM: 497/1035=48%, PB: 651/1307=50%



# Cost

- ◆ 15,000,000 JPY (150,000 \$) / 1,000 family donors / year
- ◆ Two persons participate.
- ◆ HP is shared with JSHCT (JDCHCT).



日本骨髄バンク



JSHCT

The Japan Society for Hematopoietic Cell Transplantation

# HSC Donor's Booklet

The 1st Edition  
(2010.04.26)

---

JSHCT  
JMDP

# Contents 1/2

Preface .....	3
1. How to use this booklet .....	4
2. Your information .....	5
3. How to contact with the center (Family donor) .....	6
(Bank donor) .....	7
4. For doctors other than transplant/harvest teams .....	8
5. Schedule of BM donation .....	9
6. Schedule of PB donation .....	10
7. Requirements to donors .....	11~15
8. About BM donation	
(1) Your own blood storage .....	16~18
① Requirements at pre-storage	
② Requirements on the day for the storage	
③ Requirements after the storage	

# Contents 2/2

(2) How to harvest marrow .....	19
(3) Possible adverse events at the donation .....	20
(4) Post donation .....	21
① Requirements at post donation	
② About long-term follow up	
<b>9. About PB donation</b>	
(1) How to donate PBSC .....	23
(2) About G-CSF administration .....	24~25
① Possible adverse events caused by G-CSF administration	
② Self check points when you receive G-CSF at out-patient clinic	
(3) About PBSC harvest .....	26
① Self preparation right before donation	
② Possible adverse events during harvest	
(4) After PBSC donation .....	27~29
① Possible adverse events after PBSC donation	
② Within several days	
③ Within one month	
④ After one month	
<b>10. Letters to the patients (At bank donor only) .....</b>	<b>30</b>

# Discussion-1

- ◆ **The system of preregistration for hematopoietic stem cell family donors has worked under the collaboration of the participating institutes. The frequency and the severity of adverse events were, so far, not significantly different between PB and BM donors.**

# Discussion-2

- ◆ **The fact that no life-threatening acute adverse events have been observed may suggest that pre-registration of donors may have the effect to prevent such events.**

# **Collaborators**

- ◆ **Department of Promotion for Blood and Marrow Transplantation, Aichi Medical University School of Medicine**
- ◆ **Japan Society for Hematopoietic Cell Transplantation**
- ◆ **EPS Co.**
- ◆ **Grant, Ministry of Health, Labor and Welfare**