

in collaboration with the



2ND WORKSHOP OF THE WBMT

Salvador - Bahia, Brazil



Donor selection

- ✓ Haplo *versus* cord
- ✓ Resource limited environment
- ✓ Donor registries
- ✓ Domestic *versus* international donor registries

Haplo *versus* cord





Placental blood



- ✓ Four domestic public banks
- ✓ Several private banks
- ✓ Expensive cords from abroad (NMDP)
- ✓ Poor quality of the domestic cords

Placental blood



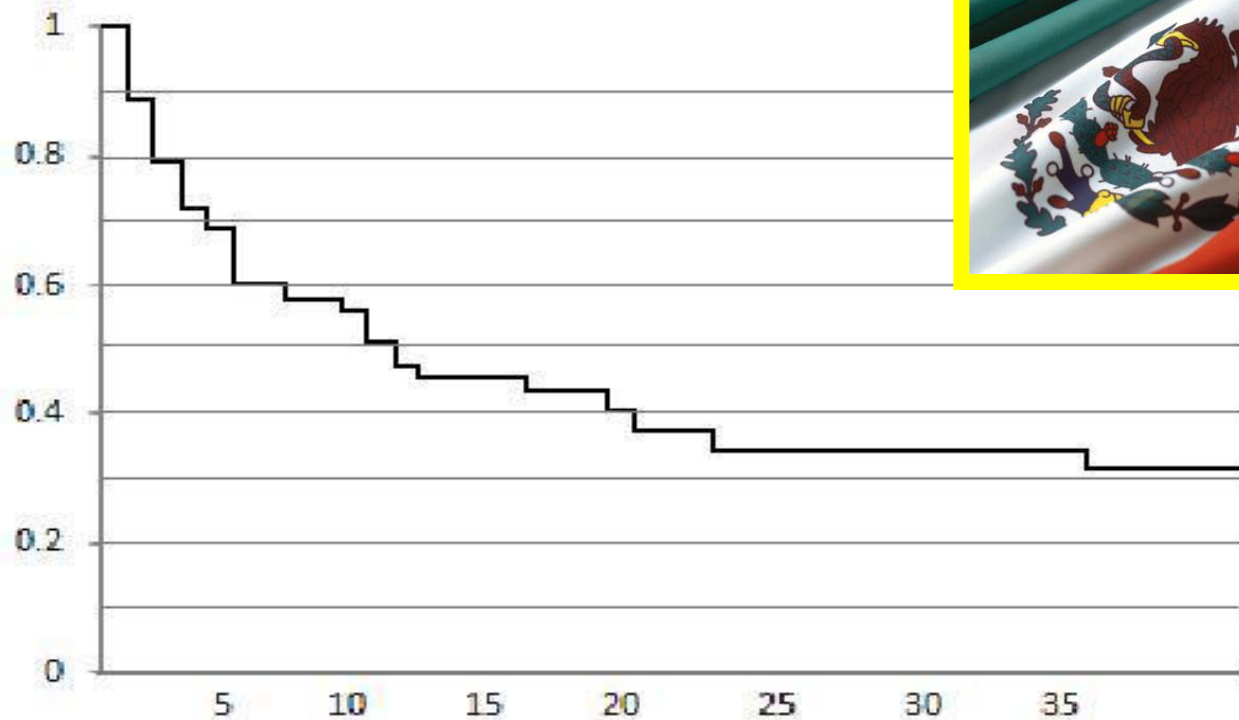
- ✓ Domestic cord: 3 000 USD
- ✓ Imported cord: 30 000 USD
- ✓ Restrictive

Long-term results of placental blood allografting using reduced-intensity conditioning: multicenter experience in a developing country

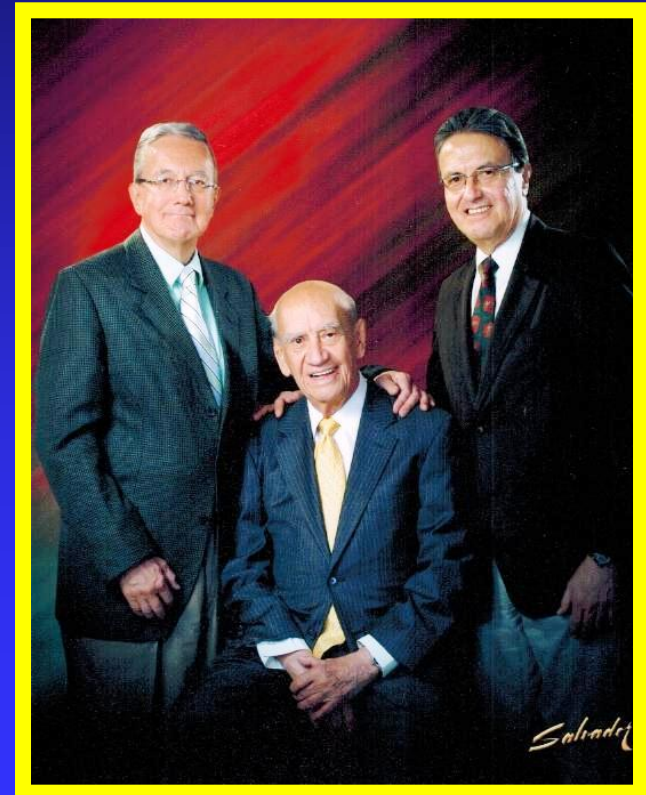
Guillermo J. Ruiz-Delgado^{1,2}, Consuelo Mancias-Guerra³, Julio Macias-Gallardo¹, Oscar Gonzalez-Llano³, Ana Hernandez-Arizpe¹, Laura Nelly Rodriguez-Romo³, Sylvia Aide Martinez-Cabriales³, David Gómez-Almaguer³, Guillermo J. Ruiz-Argüelles^{1,2}

¹Centro de Hematología y Medicina Interna de Puebla, ²Laboratorios Clínicos de Puebla, Clínica Ruiz, Puebla, Mexico, ³Hospital Universitario, Universidad Autónoma de Nuevo León, Monterrey, Mexico

68 placental blood allografts



Haploidentical allografts





VS



Hematology 2013, *in the press*

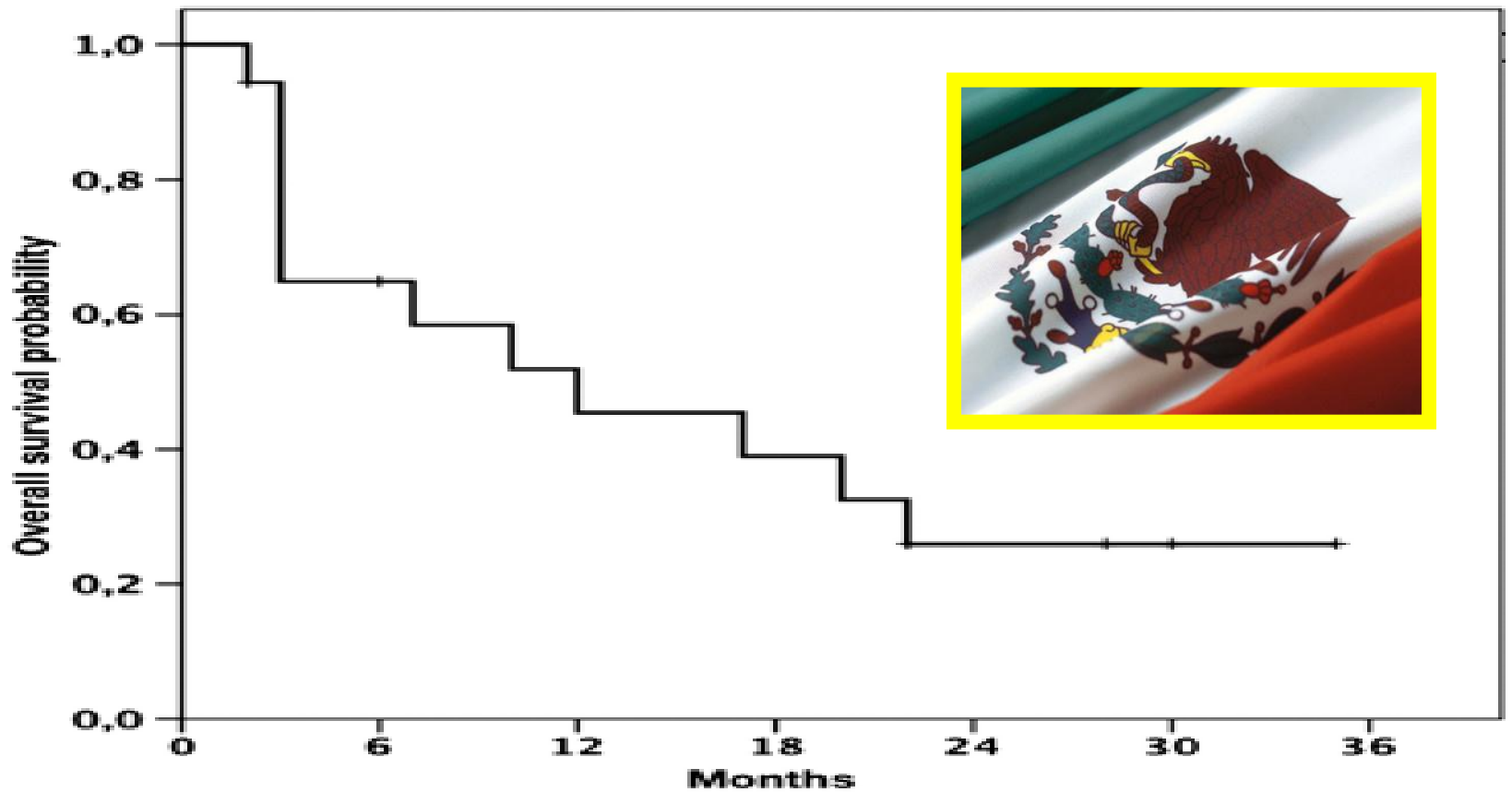


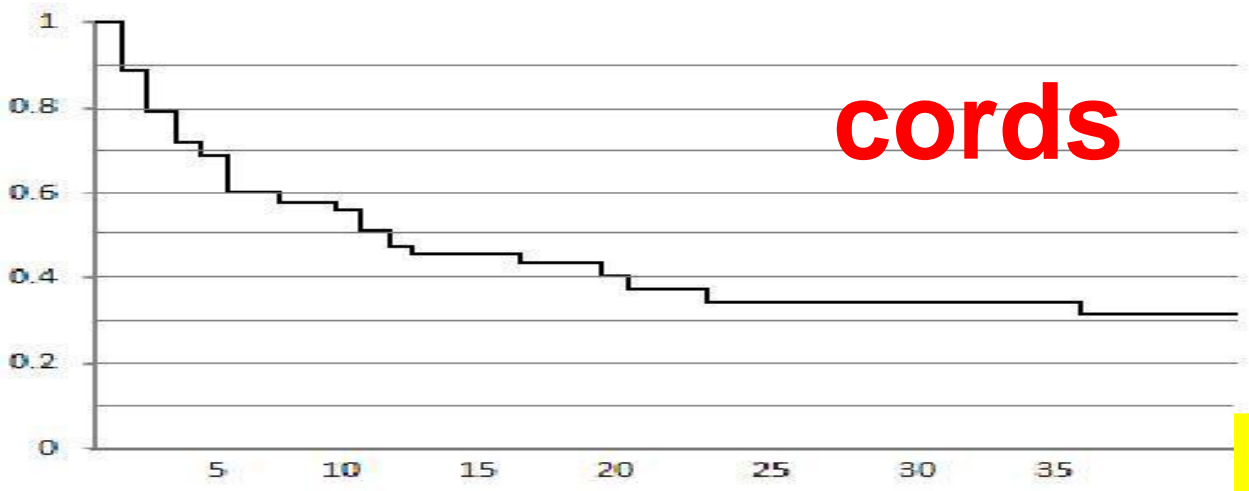
Original research paper

Feasibility of an outpatient HLA haploidentical stem cell transplantation program in children using a reduced-intensity conditioning regimen and CD3–CD19 depletion

Oscar González-Llano, Laura Nelly Rodríguez-Romo, María del Consuelo Mancías-Guerra, Luz Tarín-Arzaga, José Carlos Jaime-Pérez, José Luis Herrera-Garza, Olga Graciela Cantú-Rodríguez, César Homero Gutiérrez-Aguirre, Ricardo Daniel García-Sepúlveda, Ana Yuritzen García-Marín, Laura Villarreal-Martínez, María del Rosario Salazar-Riojas, David Gómez-Almaguer

18 haploidentical allografts





cords



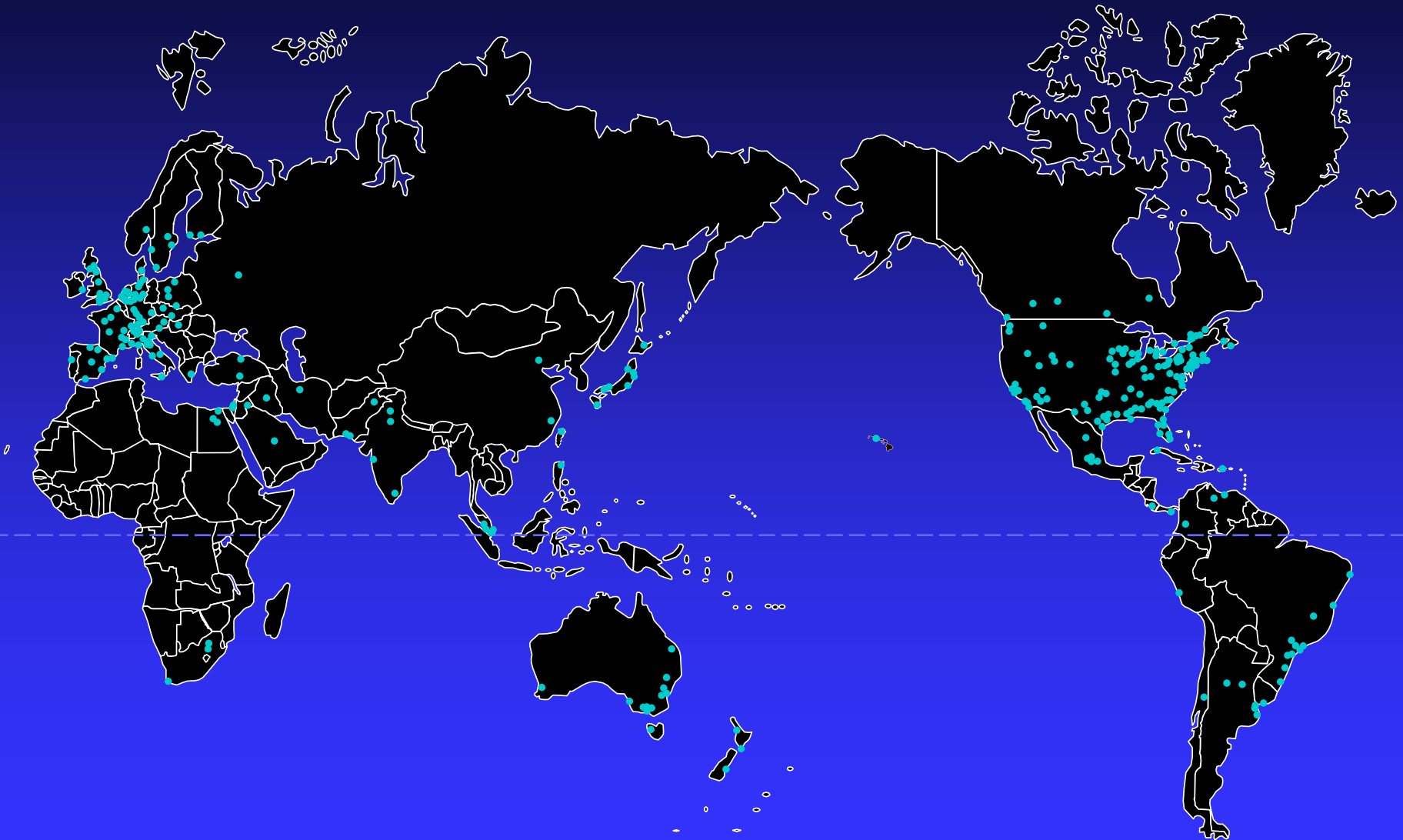
haplos

Haplos *versus* cords

- ✓ Similar long term results
- ✓ Haplos are cheaper (Cy)
- ✓ No cord blood banks
- ✓ More realistic in
underprivileged circumstances

**Resource limited
environment**

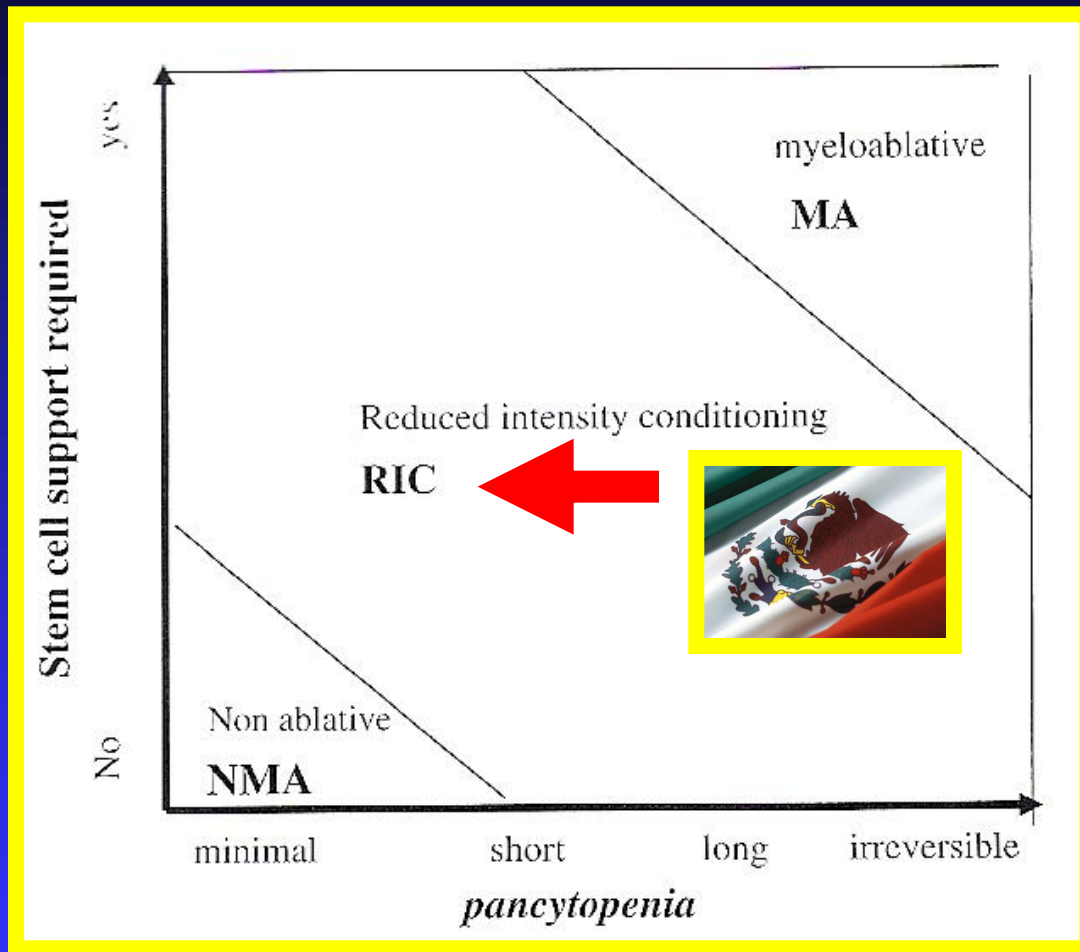
Centers participating in the CIBMTR 2011



A Mexican way to cope with stem cell grafting

Guillermo J. Ruiz-Delgado, Guillermo J. Ruiz-Argüelles

Centro de Hematología y Medicina Interna de Puebla, Clínica Ruiz, Puebla, Mexico



BBMT 2009; 15:1628

Allografts



Traditional

Mexican approach

■ Self-recovery	Impossible	Possible
■ Outpatient	Impossible	Possible
■ Transfusions	++	+ / -
■ GVHD	++	+
■ 100-day mortality	30 – 50%	17 %
✓ Cost	300 000 USD	20 000 USD
✓ Developing countries	Difficult	Possible

Donor registries

Donor registries



✓ Domestic: DONORMO

- Less than efficient
- Transplant center restricted
- Expensive

✓ International

- CRIR
- NMDP



ONETM
Tablet
ng Agent

HEALTHY LIVINGS OF
HALASSEMICS

r for Good Compliance
Iron Binding & Effective Removal
from the Body
cant Cardioprotective Effect
Combination Therapy
amine
ost of Treatment

GPO
www.gpo.or.th
Thailand

Government Pharmaceutical Organization

of :
n, Biological,
ment,

GPO

E
T
E
Us
Th
Pro

..... this is the end-result of sodality and friendship, two uncommon values in a culture driven by rivalry, jealousy, disqualification, economic interest and the zeal to reach that vacuum known as success.....

Julio Glockner