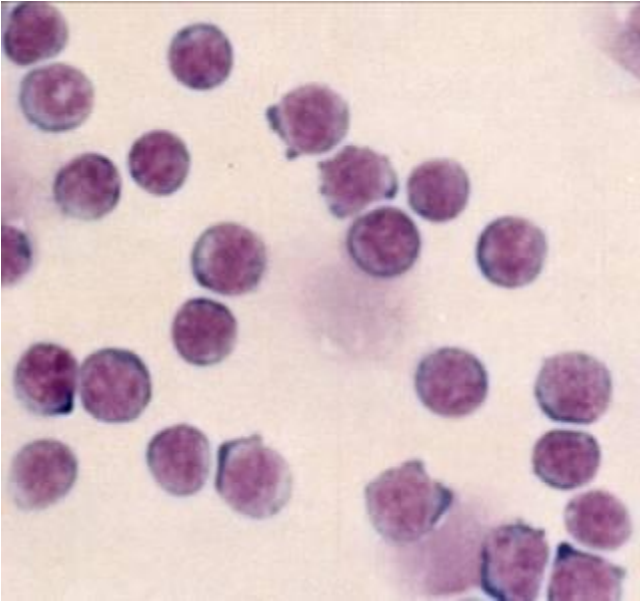


What do we need to get started?

Hildegard Greinix
Medical University of Vienna
Austria



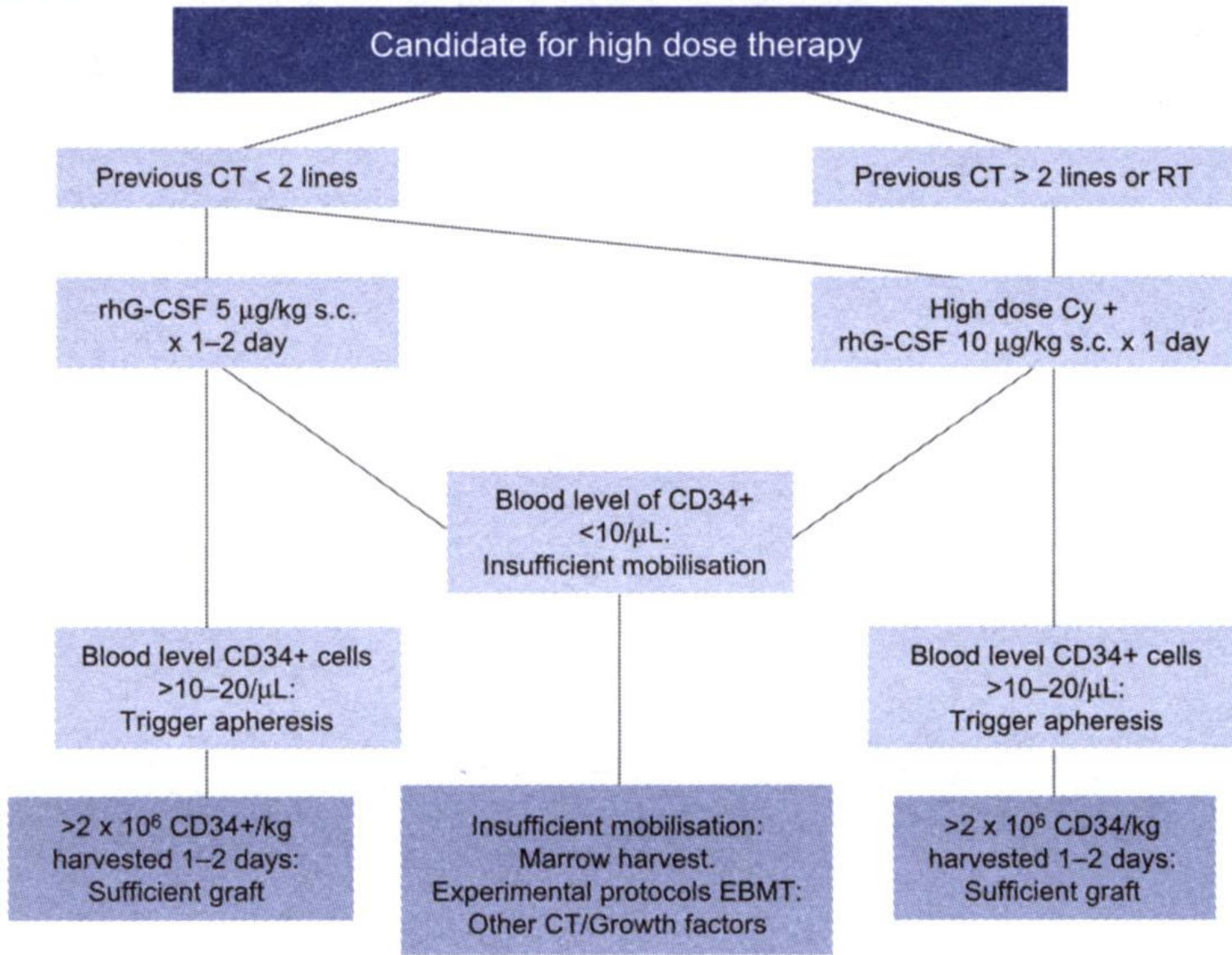
What do we need for autologous HCT?

PBSC collection facility

Expertise in PBSC mobilisation

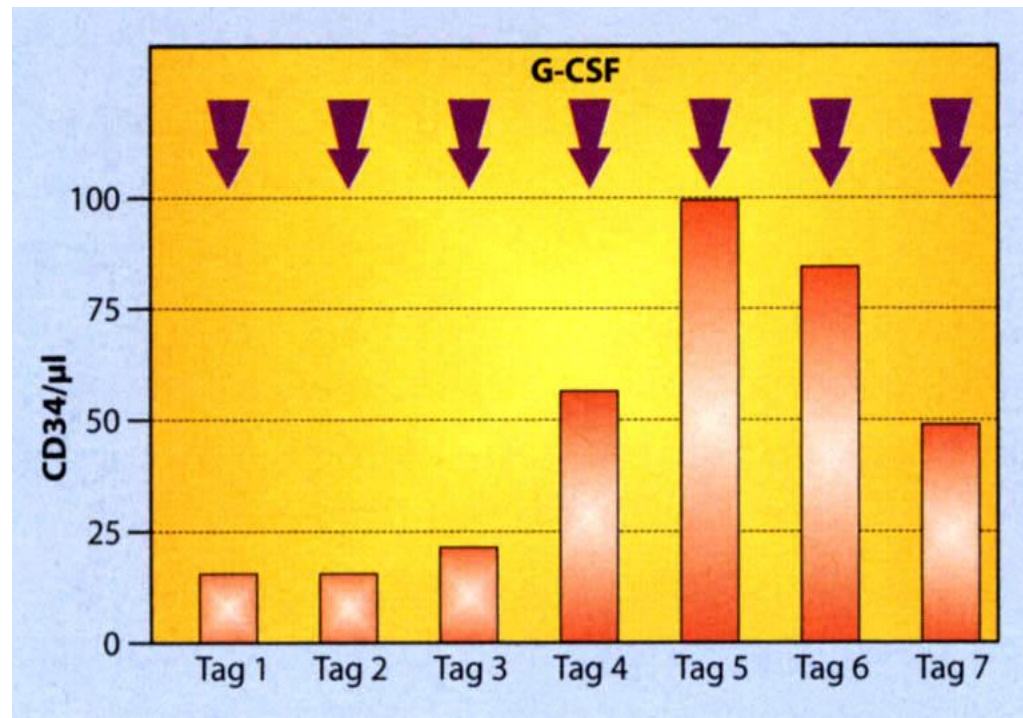


Figure 1: A proposed algorithm for procurement of autologous grafts





PBSC collection



Cryopreservation of PBSC



What else do we need for autologous HCT?

- **Hematologic/oncologic unit**
 - Expertise in high-dose chemotherapy
 - Expertise in supportive care: infections, toxicities
- **Blood product support**
 - Diagnostics of infections

What do we need for allogeneic HCT?

HLA typing lab

Hematological/oncological unit

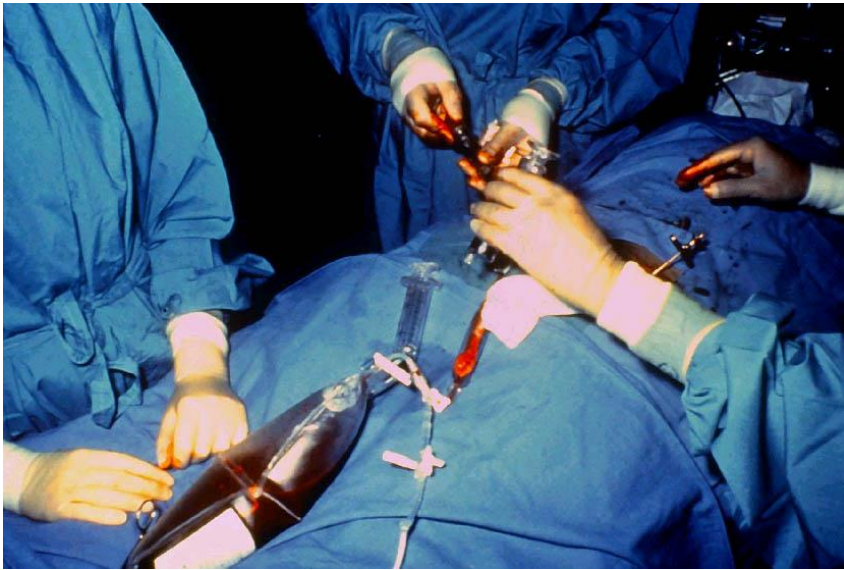
Expertise in high-dose chemotherapy

Expertise in supportive care: infections, toxicities

Expertise in GVHD

What do we need for allogeneic HCT?

Stem Cell Harvest Facility



Bone marrow harvest



PBSC collection

What do we need for allogeneic HCT?

Blood product support

Post-transplant care facility

Expertise in acute and chronic GVHD

Expertise in infections

Monitoring of MRD in neoplasias

Monitoring of chimerism

What do we need for allogeneic HCT with Cord Blood?

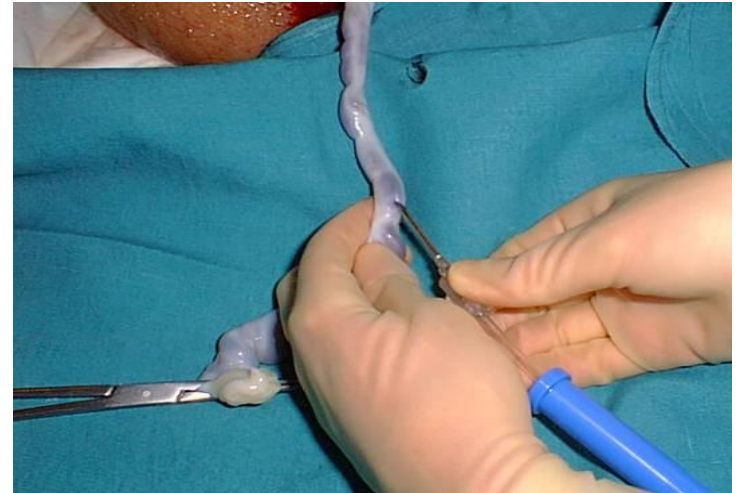
HLA typing lab

Hematological/oncological unit

Expertise in high-dose chemotherapy

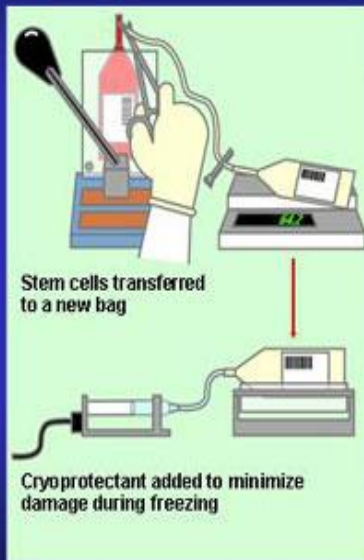
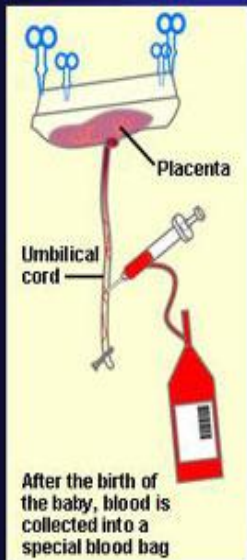
Expertise in supportive care: infections, toxicities

Expertise in GVHD



What do we need for allogeneic HCT with Cord Blood?

Placental and Cord-Blood Stem Cell Transplants



- Cord blood bank
- National/international registry to access suitable CB products

What do we need for allogeneic HCT with Cord Blood?

Blood product support

Post-transplant care facility

Expertise in acute and chronic GVHD

Expertise in infections

Monitoring of MRD in neoplasias

Monitoring of chimerism

